



## Manual surface safety barrier up to 6m



- ▶ Crash test certified barrier
- ▶ Provides a high resistance level
- ▶ Available with standard and shallow sealing depth
- ▶ Swinging opening in both directions

INDUSTRY URBAN SEVESO SITES

### CRASH TEST



- Crash test certified resistance: can stop a 7,5T vehicle launched at 48 km/h
- Speed: 48 km/h
  - Weight: 7 T 500
  - Kinetic energy: 667 000 joules
  - Penetration : 1m

<b>Resistance (joules)</b>	667 000
<b>Paint / finish</b>	RAL 7016 / Polyurethane coating
<b>Width</b>	From 2 to 6 m
<b>Locking</b>	With padlocked locking pin

### MAIN CHARACTERISTICS

- Rotating manual barrier, mobile - height 90 cm & up to 6m
- Available with shallow sealing depth or standard sealing

### TECHNICAL CHARACTERISTICS

- Steel structure
- Anti-corrosion treatment by hot galvanisation and polyurethane coating
- Steel tube posts ø250 mm
- Steel arm
- Opening in both directions (180°)
- Arm locks in open position

# ALEMSB-C50

## OPTIONS

### Visibility

- Reflective stripes

### Safety

- Lock padlock

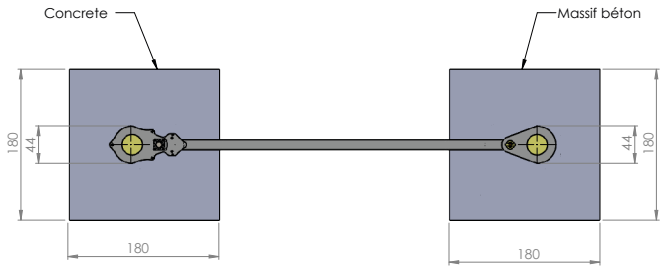
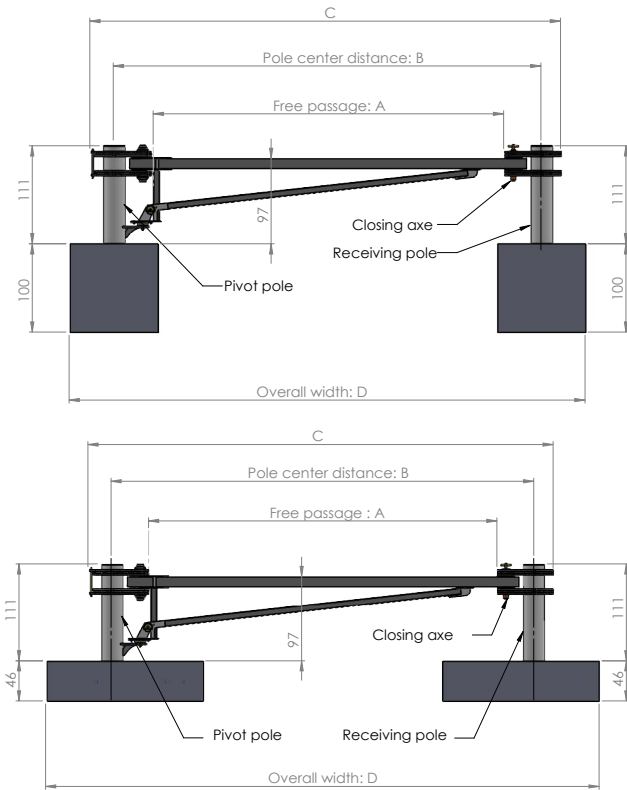
### Installation

- Shallow sealing depth

### Customisation

- Specific RAL colour
- Bicolour option (pillars / arm)

## INSTALLATION



Name	Free passage:	Pole center distance:	C	Overall width:	
	A	B		D	
MSB-300-C50/FP	297	385	433	485	535 (FP)
MSB-400-C50/FP	397	485	533	585	635 (FP)
MSB-500-C50/FP	497	585	633	685	735 (FP)
MSB-600-C50/FP	597	685	733	785	835 (FP)
MSB-HTS-C50/FP	HTS - 3	HTS + 85	HTS + 133	HTS + 185	HTS + 235 (FP)

## CRASH TEST



Crash test carried out by an independent COFRAC approved control body (French Accreditation Committee)