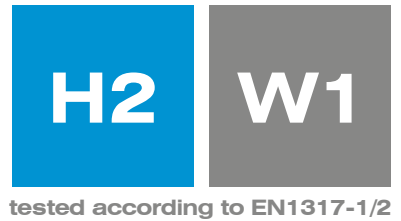


REBLOC 80XW_8

Standard element

Application
Permanent system

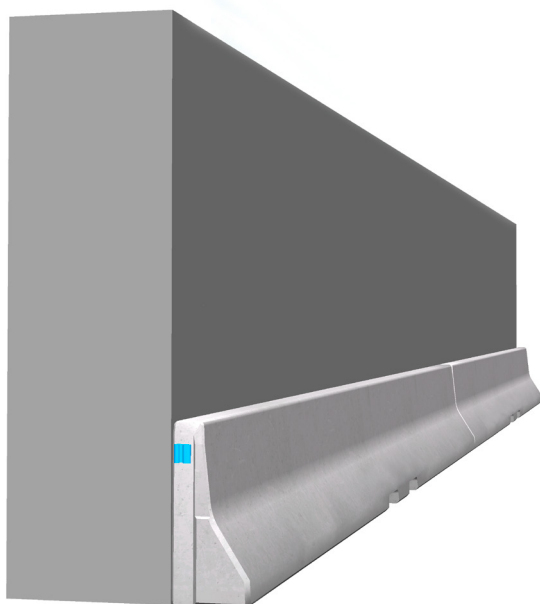
Installation
**Free standing
in front of rigid wall**



Containment level **H2** (covers H1, N1, T3, T2, T1)
Working width **W1** in combination with rigid wall
(covers W2, W3, W4, W5, W6, W7, W8)
Impact severity level **ASI B**

Product features & Advantages

- Optimal use along tunnel walls
- No anchorage necessary: free standing system
- Minimum space requirements due to low system width and low working width W1
- High installation speed reduces duration of construction site



The free standing system REBLOC 80XW_8 has been designed for the application along vertical (tunnel) walls. Thanks to its asymmetric shape, it can be positioned seamlessly along already existing tunnel walls. Due to the low system width valuable space keeps remaining and a sufficient width of the traffic lanes is ensured.

Through the positioning of the concrete barriers along the tunnel wall, the impact severity of deviating vehicles is reduced. Thereby the safety of vehicle passengers is ensured according to EN 1317 with ASI B.

The elements are connected by the patented REBLOC® coupling to form a strong chain. The high installation speed shortens the construction site duration and the traffic restricting measures for the on-coming traffic are reduced to a minimum. To allow an efficient installation every element has special openings for a forklift. So the elements can be positioned completely seamless to the back wall.

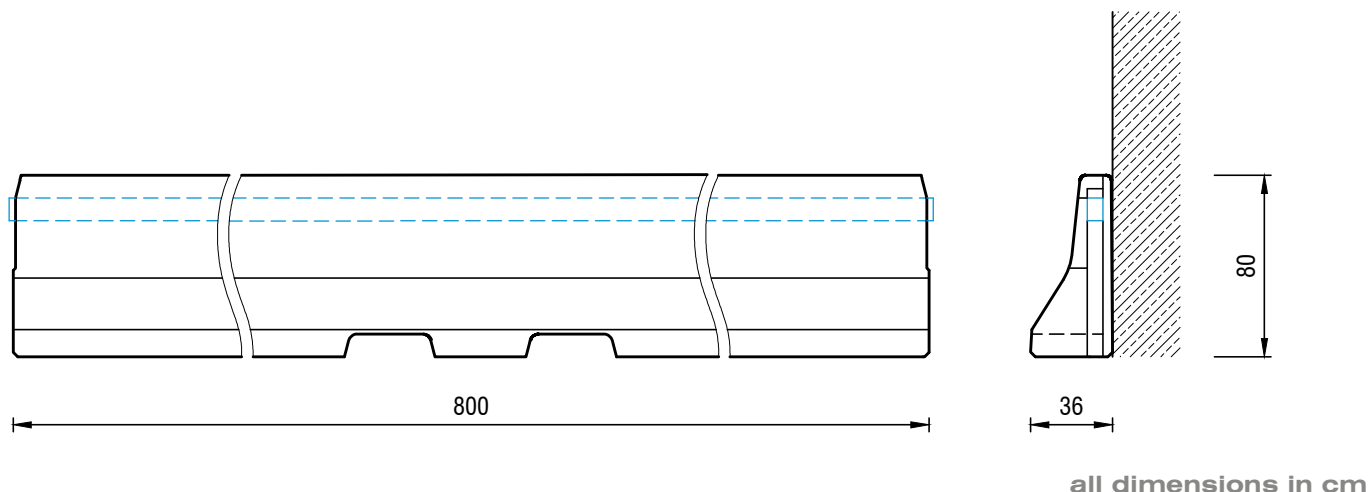
REBLOC 80XW_8

Standard element



tested according to EN1317-1/2

Technical data



Containment level	H2
Working width	W1 in combination with rigid wall
Impact severity level	ASI B
Vehicle intrusion	VI1 in combination with rigid wall
Installation	free standing in front of rigid wall
Terminal elements	not necessary, optional available
Dimensions L x W x H in cm	800 x 36 x 80 cm
Weight/element	3.400 kg
Elements/truck (24 t)	7 elements
Minimum installation length	32 m (not including terminal elements)
Curve radius	$r \geq 50$ m (the road side facing away), $r \geq 235$ m (the road side facing), smaller radii on request
Coupling/exposed steel parts	fully integrated, exposed parts hot-dip galvanized
CE certification	✓