

# REBLOC 80SA\_4

Standard element

Application  
**Temporary system**

Installation  
**Anchored in asphalt**

anchored:

**N2** **W1**

free standing:<sup>1)</sup>

free standing:<sup>1)</sup>

**T3** **W2** **N2** **W4**

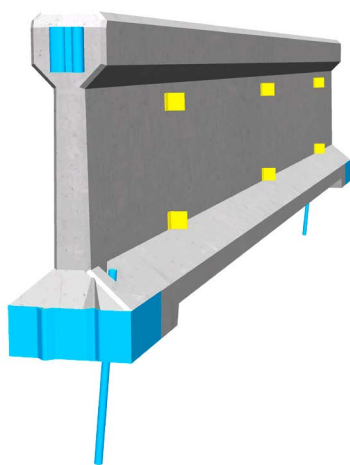
tested according to EN1317-1/2



Containment level **N2** (covers N1, T2, T1)  
 Working width **W1** (covers auch W2, W3, W4, W5, W6, W7, W8)  
 Impact severity level **ASI B**

## Product features & Advantages

- Short element length of 4 m for high flexibility and urban applications
- High protection of construction sites and traffic lanes due to very low working width W1
- Compact element design (system width 30 cm) with integrated coupling (no loose parts)



REBLOC® Temporary Systems ensure smooth traffic flow in congested areas. Traffic is separated from construction zones and protects personnel and site machinery from vehicle impact and traffic related incidents.

The REBLOC 80SA\_4 cm is ideal for narrow road widths. The slim system width of 30 cm and the low working width W1 are important determinants, if little space is available. Each element is anchored with only 2 anchor pins, which can be easily installed and removed.

The interlocking coupling not including loose parts prevents unauthorized removal of pieces and protects against vandalism.

The system is also available free standing with T3/W2 and N2/W4.

<sup>1)</sup> Details see datasheet  
REBLOC 80SA\_4\_T3/W2|N2/W4

# REBLOC 80SA\_4

Standard element

## Technical data

anchored:

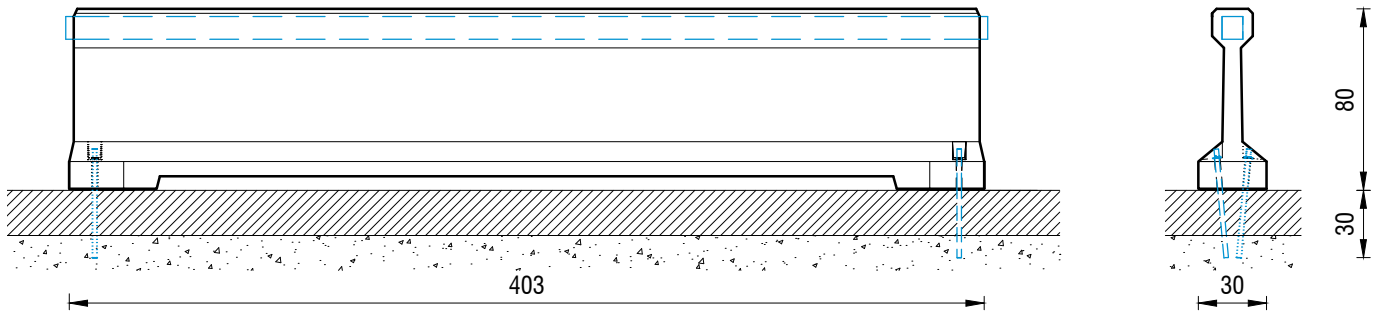
**N2** **W1**

frei aufgestellt:<sup>1)</sup>

free standing:<sup>1)</sup>

**T3** **W2** **N2** **W4**

tested according to EN1317-1/2



all dimensions in cm

Containment level	N2
Working width	W1
Impact severity level	ASI B
Installation	anchored in asphalt (2 x anchor pins REPIN20_480 per element)
Terminal elements	not necessary, optional available
Dimensions L x W x H in cm	403 x 30 x 80 cm
Weight/element	1010 kg
Elements/truck (24 t)	23 elements
Minimum installation length	120 m (30 elements)
Curve radius	$r \geq 87$ m
Coupling/exposed steel parts	fully integrated, exposed parts hot-dip galvanized
Features	rubber pads in contact areas for protection of the road surface

## System element - combinable (optional)



Terminal element  
REBLOC 80S\_4T\_S37  
(inclination 1:5)

<sup>1)</sup> Details see datasheet  
REBLOC 80SA\_4\_T3/W2|N2/W4